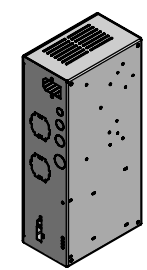
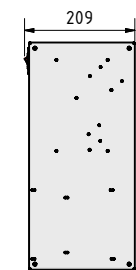


Control box equipped with 3m cable



CATEGORY	CEILING RAIL SYSTEM	DRAWING TYPE	
MODEL	FPCRMV2-LME8000-ER	DRAFT	FINAL
FEATURE A	TOTAL APPLICATION LENGTH 8meters	X	
FEATURE B	ELECTRIC LINEAR MOTION & ELECTRIC ROTATION	REVERSION	DATE
DRAWING No	V1.1.13112014	NO	



Total application weight (without TV set): ~125kg

ALL RIGHTS STRICTLY RESERVED. REPRODUCTION OR ISSUE TO THIRD PARTIES IN ANY FORM WHATEVER, IS NOT PERMITTED WITHOUT WRITTEN AUTHORITY FROM UNITECH SYSTEMS.