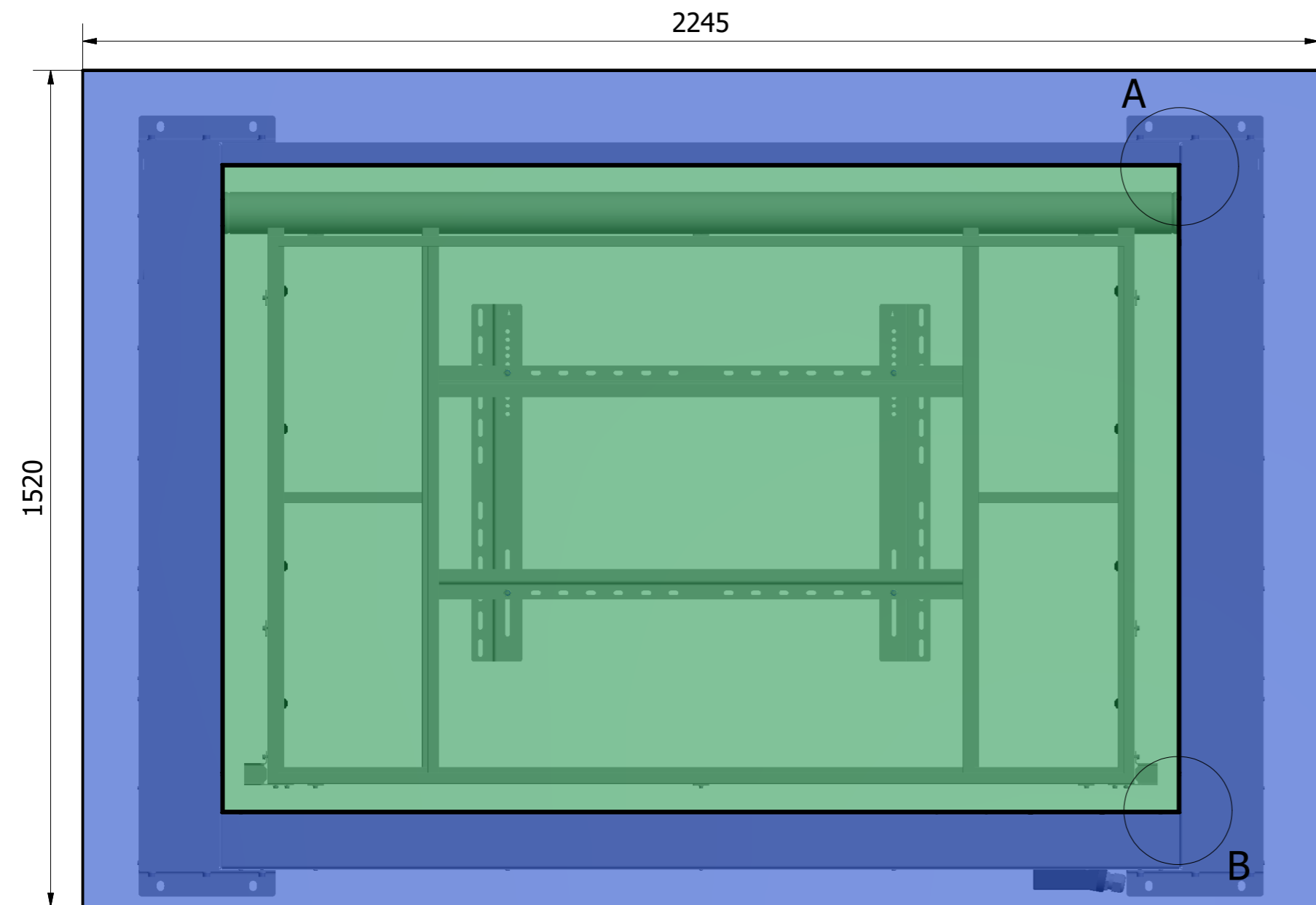
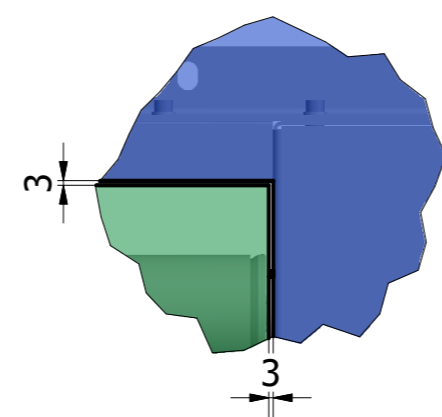


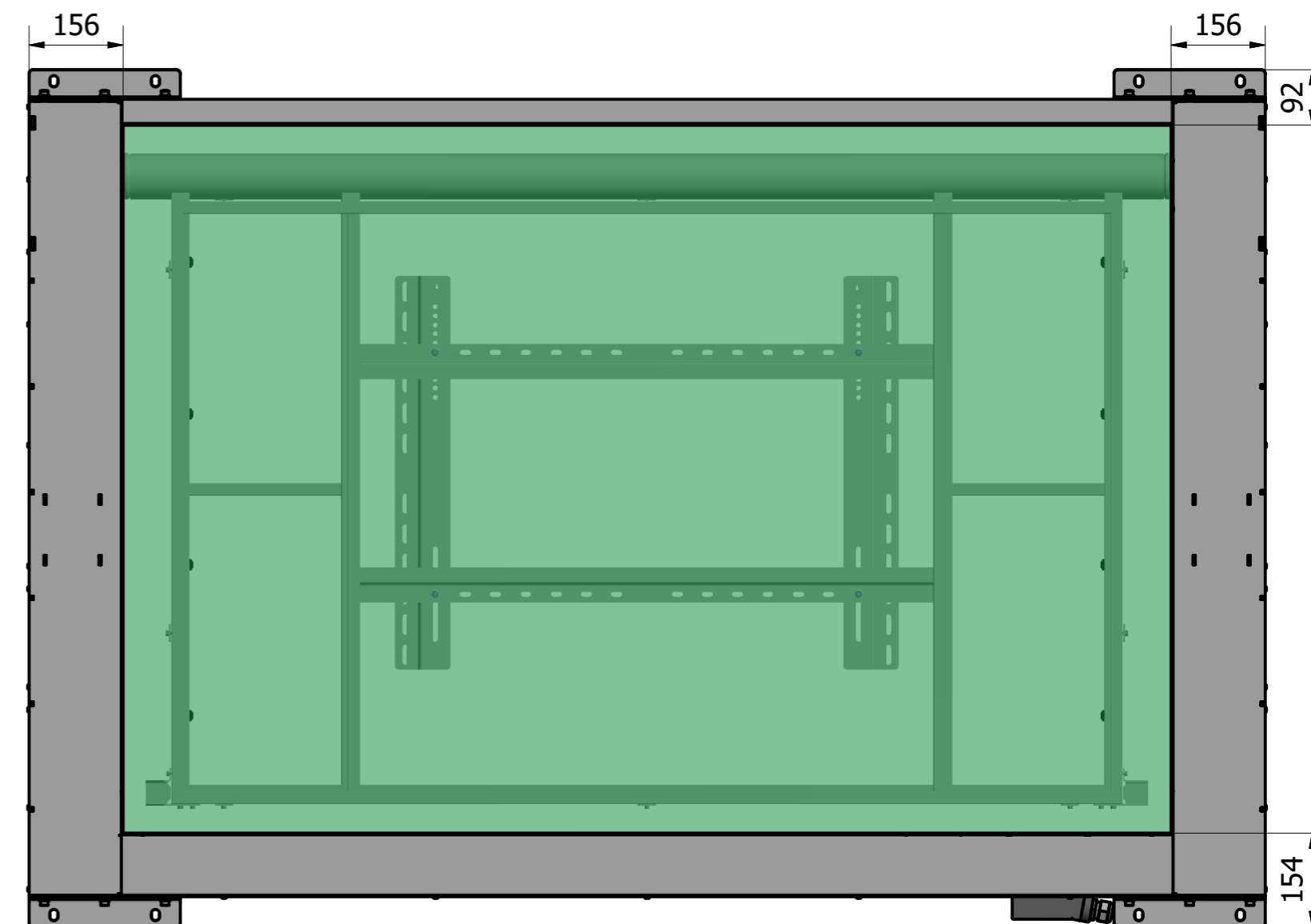
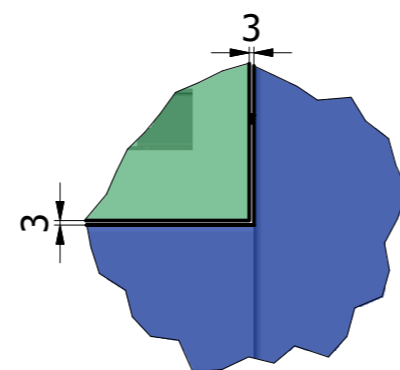
FPLCV2-75 220 CEILING DETAILS



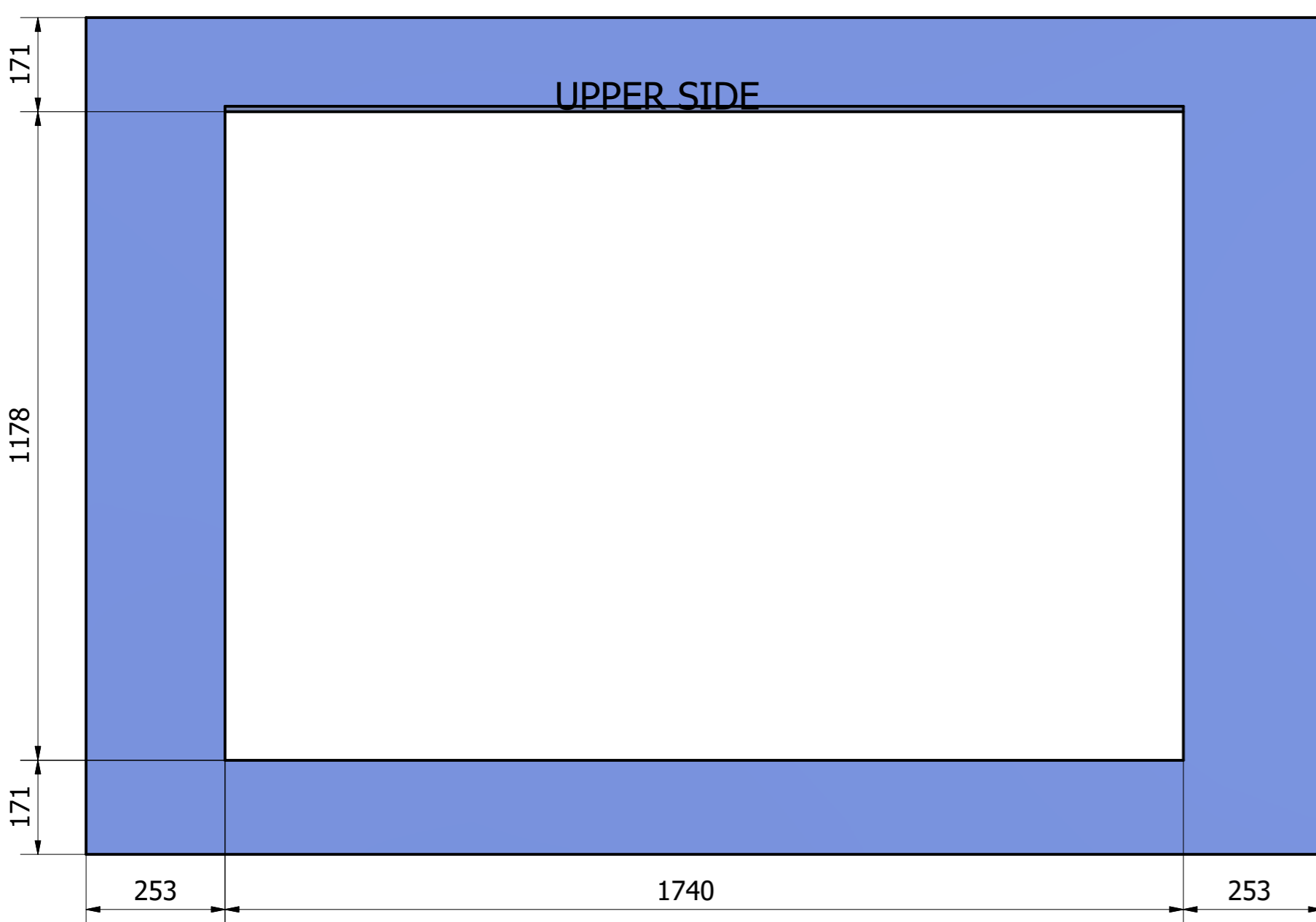
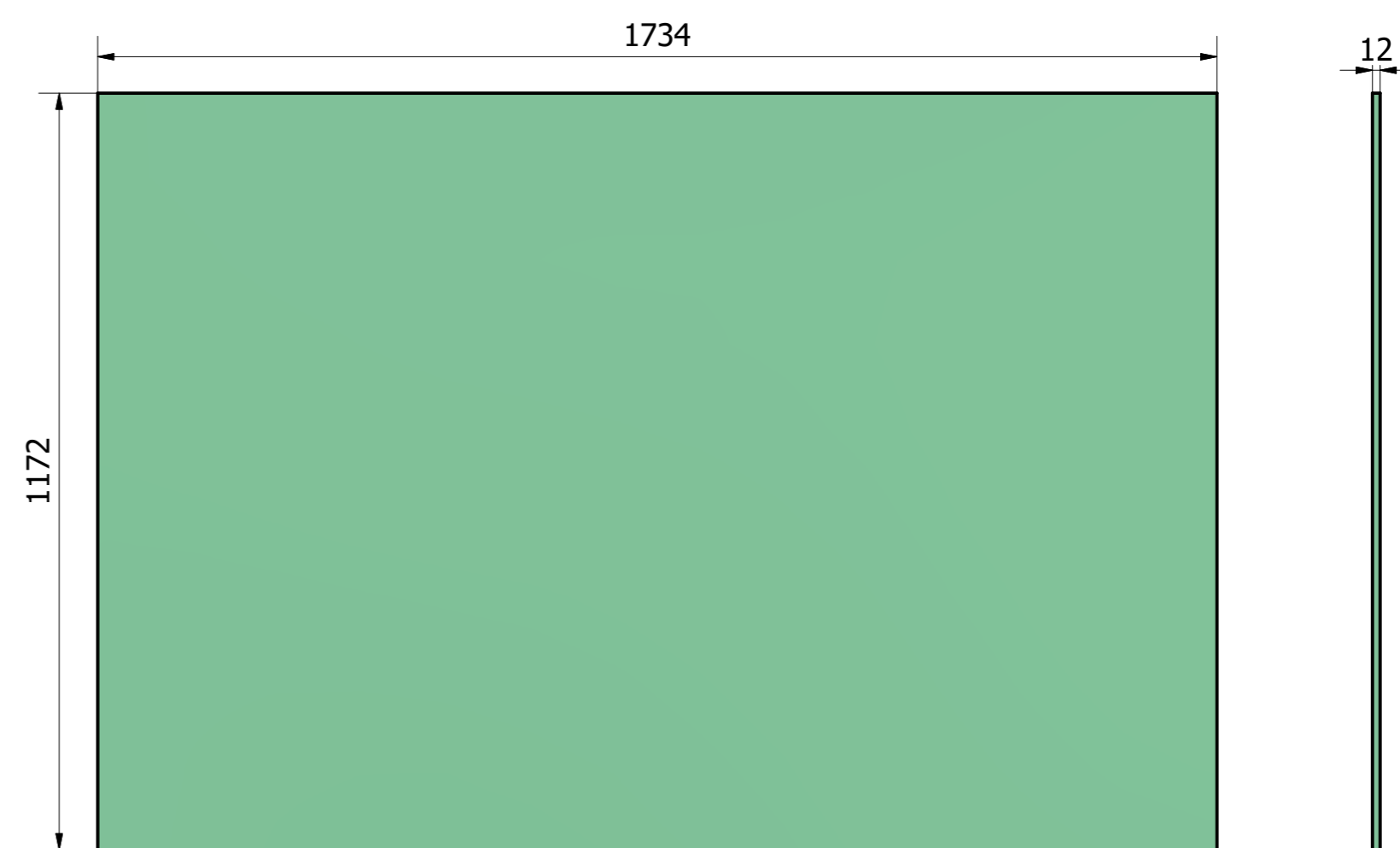
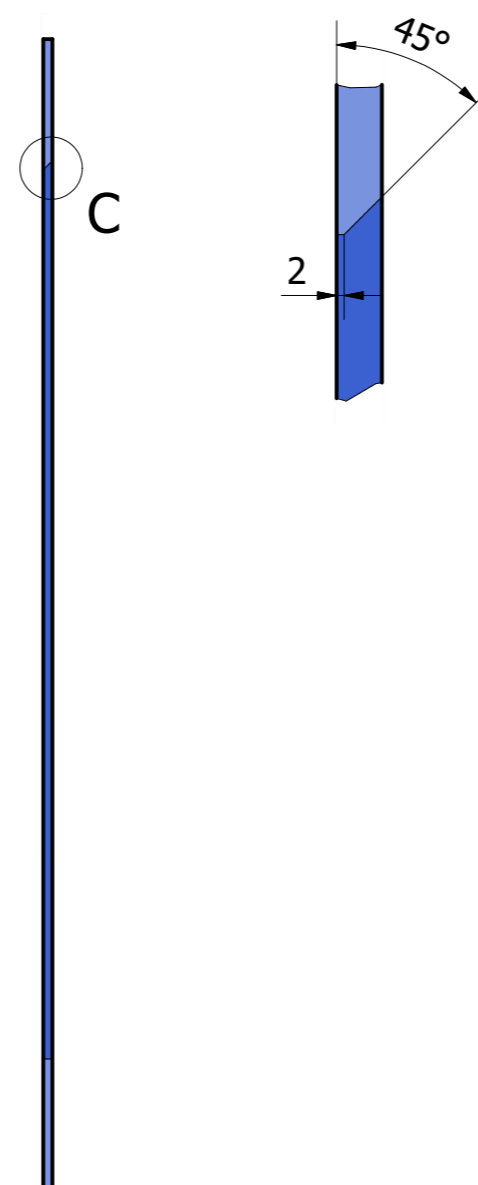
DETAIL A (1 : 5)



DETAIL B (1 : 5)



DETAIL C (1/2)



BLUE= Suggested MDF or Plywood piece of ceiling cover, with dimensions 2245x12x1520mm (WxHxD), which must be fixed on the ceiling after lift's instalation is finished, but always be able to be removed in case the lift needs to be uninstalled

GREEN= Suggested MDF or Plywood movable part of ceiling cover, with dimensions with dimensions 1734x12x1172mm (WxHxD), which must be mounted on the moving part of the lift.

CATEGORY	FLAT PANEL CEILING LIFT	DRAWING TYPE	
MODEL	FPLCV2-75 220	DRAFT	FINAL
FEATURE	MAXIMUM SWIVELING ANGLE 100°, LOCKING SYSTEM		X
COLOUR	POWDER COATING BLACK (RAL9005) or WHITE FLOSS (RAL9016)	REVISION	DATE
DRAWING No	V1.1.19112020-VK	APPROVED BY:	NO

